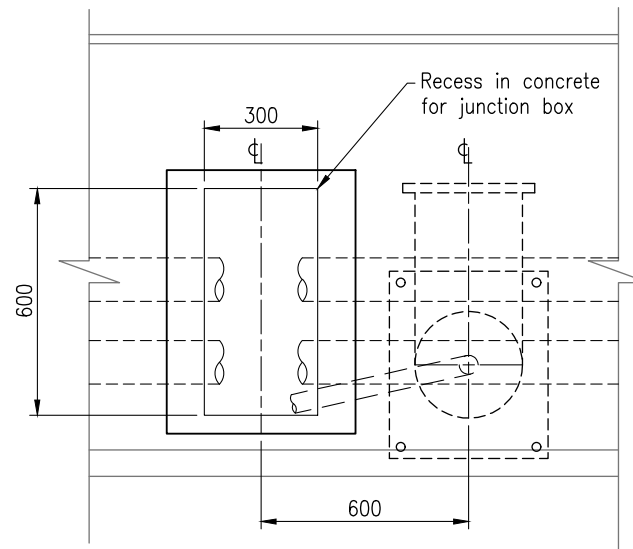
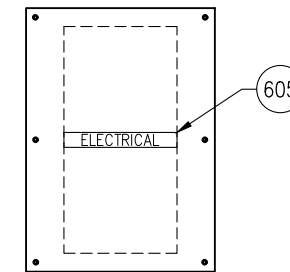


SECTIONAL ELEVATION

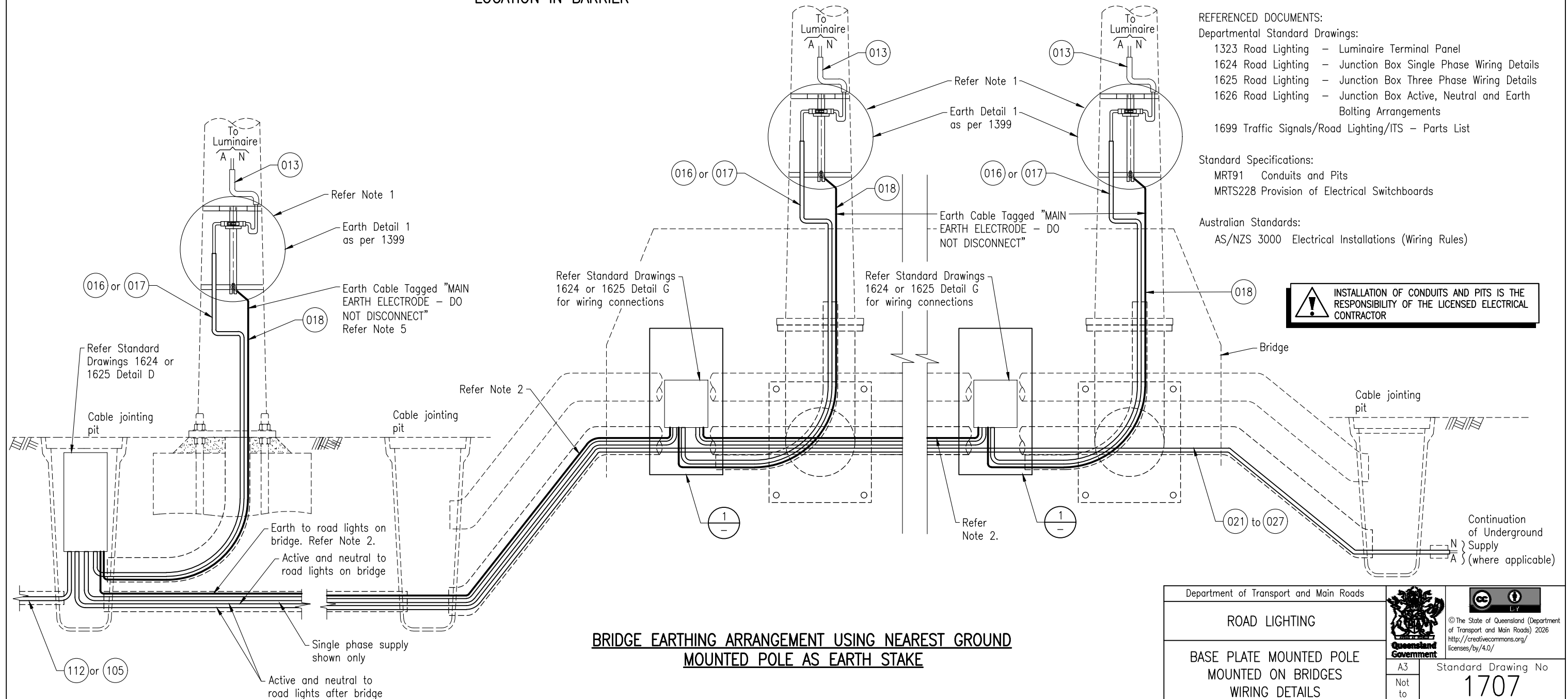


FRONT VIEW



JUNCTION BOX COVER PLATE

**DETAIL 1**  
**LAMPSTAND AND JUNCTION BOX LOCATION IN BARRIER**



**BRIDGE EARTHING ARRANGEMENT USING NEAREST GROUND MOUNTED POLE AS EARTH STAKE**

**NOTES:**

1. Ensure earth connection properly tightened before installing luminaire terminal panel. Torque on nuts of assembly to be approximately 8Nm. Use a digital torque wrench or ring spanner to tighten. Lubricated/oiled components or power tool based fastening are not accepted.
2. The earth cable connecting to the bridge lighting shall be the same cross sectional area as the submains cable.
3. Poles on structure to have a label on terminal panel showing pole number where earth electrode is located.
4. Poles on structure must not have MEN Link.
5. Sheet 1 – The pole footing is used as the main earth electrode supplying the bridge lights.
6. Sheet 2 – The earth stake in earth pit is used as the main earth electrode supplying bridge lights.
7. Dimensions are in millimetres unless shown otherwise.

**ASSOCIATED DEPARTMENTAL DOCUMENTS:**

- Standard Drawings
- Specifications
- Traffic and Road Use Management Manual (TRUM)
  - Volume 4 Part 3 Electrical Design for Roadside Devices
  - Volume 4 Part 4 Road Lighting Dome Junction Box Assembly

**REFERENCED DOCUMENTS:**

- Departmental Standard Drawings:
  - 1323 Road Lighting – Luminaire Terminal Panel
  - 1624 Road Lighting – Junction Box Single Phase Wiring Details
  - 1625 Road Lighting – Junction Box Three Phase Wiring Details
  - 1626 Road Lighting – Junction Box Active, Neutral and Earth Bolting Arrangements
  - 1699 Traffic Signals/Road Lighting/ITS – Parts List



**Standard Specifications:**

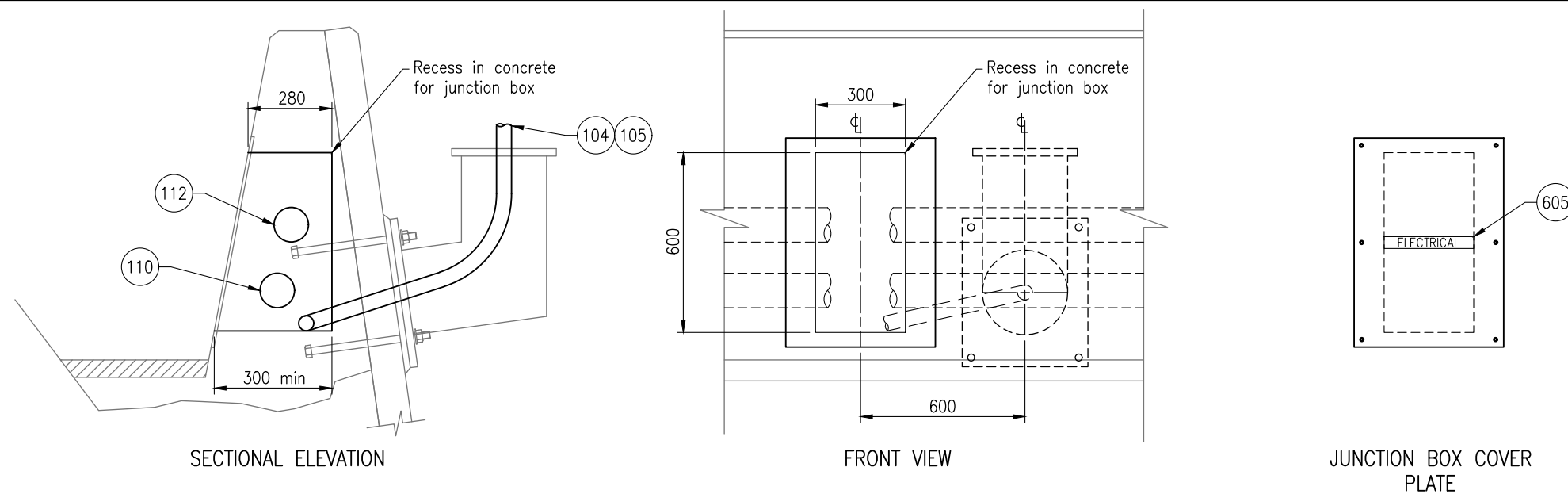
- MRT91 Conduits and Pits
- MRTS228 Provision of Electrical Switchboards

**Australian Standards:**

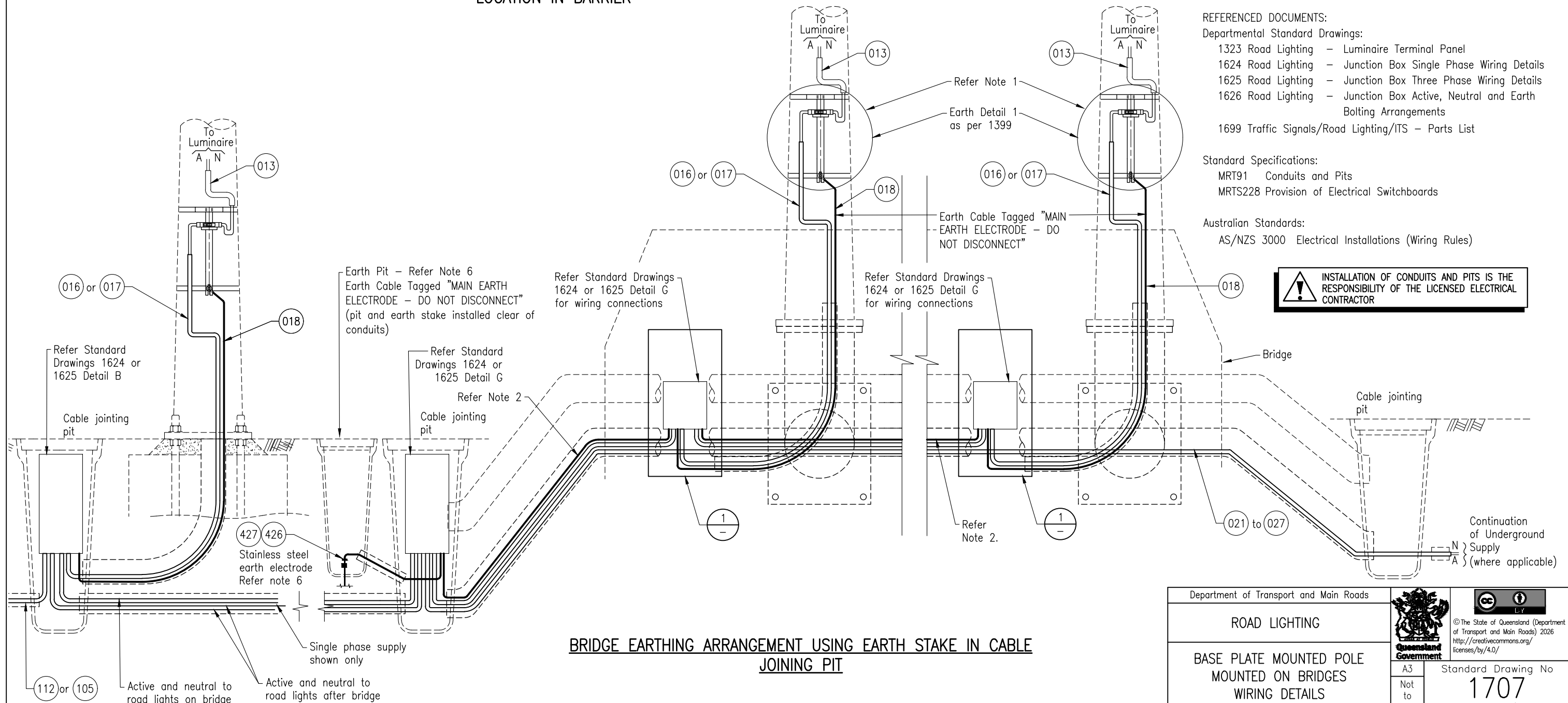
- AS/NZS 3000 Electrical Installations (Wiring Rules)

**! INSTALLATION OF CONDUITS AND PITS IS THE RESPONSIBILITY OF THE LICENSED ELECTRICAL CONTRACTOR**

Department of Transport and Main Roads		 
ROAD LIGHTING		© The State of Queensland (Department of Transport and Main Roads) 2026 <a href="http://creativecommons.org/licenses/by/4.0/">http://creativecommons.org/licenses/by/4.0/</a>
BASE PLATE MOUNTED POLE MOUNTED ON BRIDGES WIRING DETAILS SHEET 1 OF 2		Standard Drawing No <b>1707</b> Date 5/2026
A3	Not to Scale	B C D E F G H



DETAIL 1  
LAMPSTAND AND JUNCTION BOX  
LOCATION IN BARRIER



## NOTES:

1. Ensure earth connection properly tightened before installing luminaire terminal panel. Torque on nuts of assembly to be approximately 8Nm. Use a digital torque wrench or ring spanner to tighten. Lubricated/oiled components or power tool based fastening are not accepted.
2. The earth cable connecting to the bridge lighting shall be the same cross sectional area as the submains cable.
3. Poles on structure to have a label on terminal panel showing pole number where earth electrode is located.
4. Poles on structure must not have MEN Link.
5. Sheet 1 – The pole footing is used as the main earth electrode supplying the bridge lights.
6. Sheet 2 – The earth stake in earth pit is used as the main earth electrode supplying bridge lights.
7. Dimensions are in millimetres unless shown otherwise.

## ASSOCIATED DEPARTMENTAL DOCUMENTS:

- Standard Drawings
- Specifications
- Traffic and Road Use Management Manual (TRUM)
  - Volume 4 Part 3 Electrical Design for Roadside Devices
  - Volume 4 Part 4 Road Lighting Dome Junction Box Assembly

## REFERENCED DOCUMENTS:

- Departmental Standard Drawings:
  - 1323 Road Lighting – Luminaire Terminal Panel
  - 1624 Road Lighting – Junction Box Single Phase Wiring Details
  - 1625 Road Lighting – Junction Box Three Phase Wiring Details
  - 1626 Road Lighting – Junction Box Active, Neutral and Earth Bolting Arrangements
  - 1699 Traffic Signals/Road Lighting/ITS – Parts List

## Standard Specifications:

- MRT91 Conduits and Pits
- MRTS228 Provision of Electrical Switchboards

## Australian Standards:

- AS/NZS 3000 Electrical Installations (Wiring Rules)

Department of Transport and Main Roads			
ROAD LIGHTING			
BASE PLATE MOUNTED POLE MOUNTED ON BRIDGES WIRING DETAILS SHEET 2 OF 2		A3 Not to Scale	Standard Drawing No <b>1707</b> Date 05/2026
B	C	D	E F G H